



UiO • University of Oslo

How to match students and programs?

Terje P. Hagen

Department of Health Management and Health Economics



0) Outline

- Short presentation of The Master's Degree Program in Health Economics, Policy, and Management
- Assessment criteria
- Other measure to tackle differences in skills and knowledge

1) The Master's Degree Program in Health Economics, Policy, and Management

- 2 years program (Master of philosophy)
 - 120 ECTS
 - Thesis consists of 30 ECTS (1/2 year)
 - Taught in English
- Aims
 - Providing both a broad and relevant academic foundation within its core subject areas
 - Economics
 - Management and organization
 - Basic Medicine
 - Practical skills for a future career in management in various parts of the health sector
 - Internship in hospitals, governmental bodies, incl. the MoH

- The program started in 2005
 - Up to 30 students are admitted each year (fall)
 - Number of applicants 2011:
 - 169 from the local application system (Norway/EES/EU)
 - 59 applicants from the international application system
 - This year app 20-24 will hand in their master thesis
- Other programs at the department
 - BA in Health Management and Economics (Norwegian)
 - Started in 2002
 - Executive program in Health Administration
 - 25 years anniversary this year

- Applicants from all over the world induce challenges related to
 - Assessment and definition of admission criteria
 - Leveling differences in prior knowledge and skills

1) Admission criteria

- General Admission to master's degree studies requires:
 - a completed bachelor's degree comparable to a Norwegian bachelor's degree
 - a specialization defined by the program
 - a grade point average (GPA) of C or better from the BA

- In addition applicants to master programs offered in English must fulfill the language requirements by one of the following test/exams:
 - Passed examination in English foundation course (140 hours/5 periods per week) in Norwegian upper secondary school with a minimum grade of 4 (or an equivalent grade from a Nordic upper secondary school) or alternatively passed examination in English from second and/or third school year.
 - [TOEFL](#) test with a minimum score of 550 on Paper-based test, or 213 on Computer-based test or 80 on Internet-based test
 - [IELTS](#) (academic) test with a minimum score of 6.0
 - Other documentation based on individual assessment.

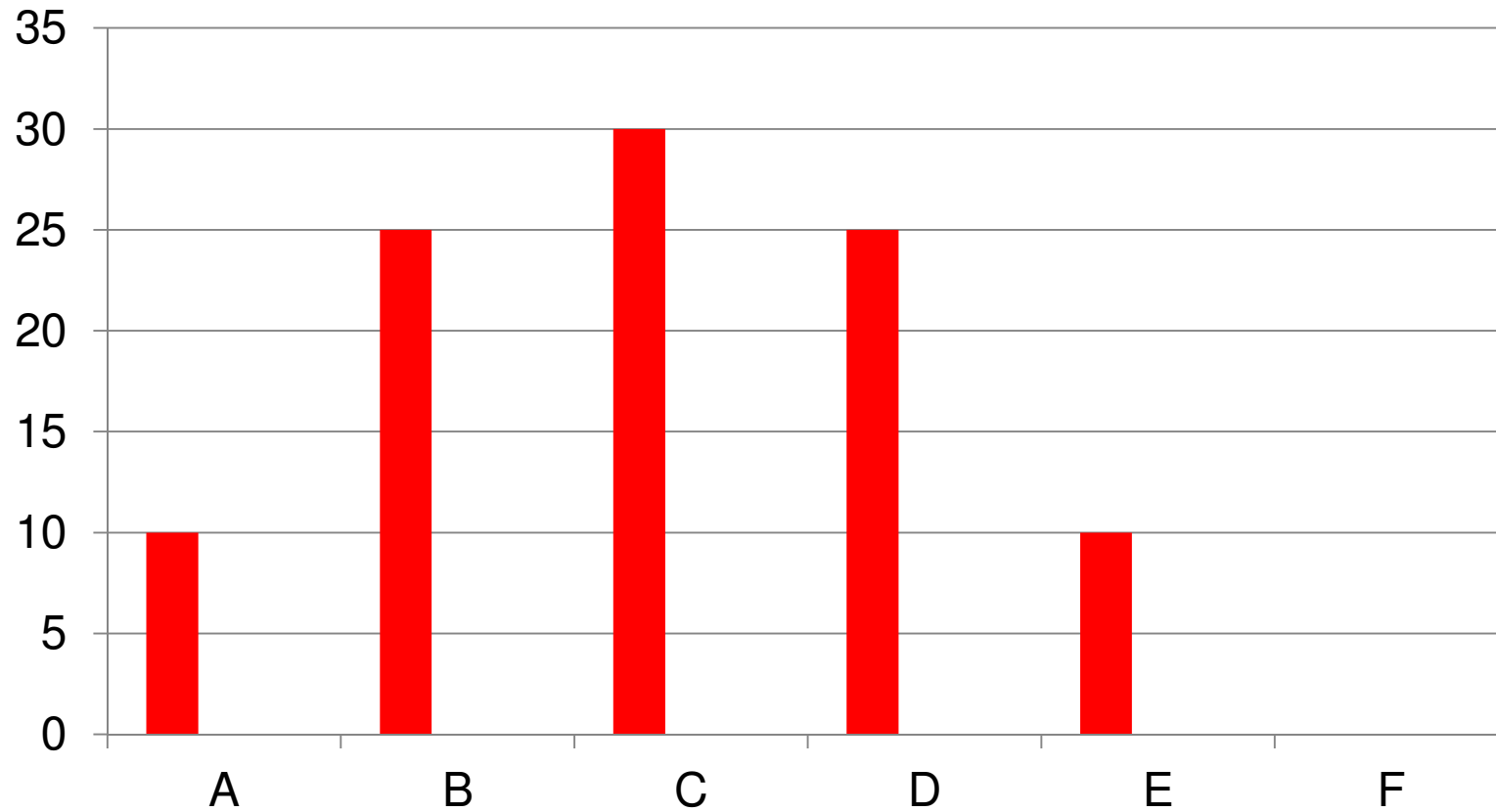
Specialization requirements defined by the program

- A Bachelor's Degree in either
 - Health Management and Health Economics,
 - Social Sciences,
 - Economics,
 - Public Administration, or
 - Health Sciences.
- Applicants without a degree in Social Sciences or Economics must have at least 60 ECTS within Social Sciences or Economic.

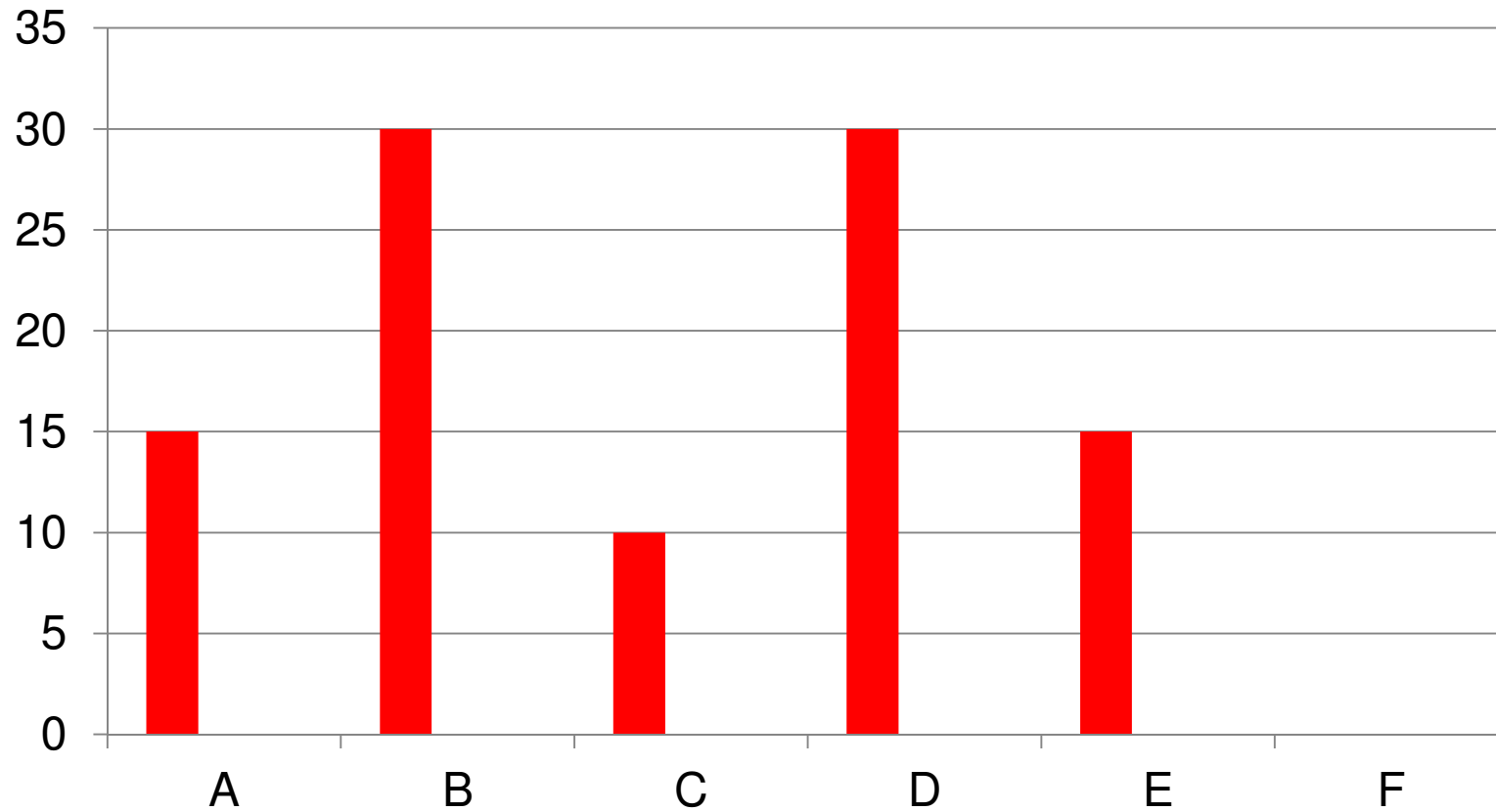
Additionally – some informal mechanisms

- Description of the grading system in most of the world
- A conversion table that covers some “problematic” countries

Unfortunately – careful assessment is not enough ...



The “two-topped” grade curve



2) Tackling differences in prior knowledge and skills

- Following the assessment process, there were still challenges related to differences in prior knowledge and skills
- Others measures to increase the quality of masters students are implemented from 2011-2012

Raising the bar

- Admission process of 2011
 - Admitted more students from the local application system, fewer from the international application system
 - International application system
 - 8 out of 59 applicants were admitted (7 responded positively)

“Pre” - courses - introductory courses

- From 2012 we will offer introductory courses in some of the core disciplines and subjects
 - Economics
 - Statistics
 - The Norwegian health care system

”Elevator” courses

- Those who feel their prior knowledge is weaker than desired will be offered an alternative route to the MA-degree based on “elevator” courses
- “Elevator” courses
 - Offered both at BA- and MA-level, but with slightly different curriculum
 - Voluntary for MA-student but a good idea if basic knowledge is lacking
- Steep learning curve the first semester

Summary

- Assessment is still challenging
- The assessment process can not solve the problems related to differences in prior knowledge alone
 - “Pre”-courses
 - “Elevator” courses

More information on this master's program:

<http://www.uio.no/english/studies/programmes/healthecon-master/>