



Brandenburgische
Technische Universität
Cottbus



09-11-2011

**HRK Nexus International Autumn
Conference**

European cooperation agreements
regarding credit transfer

Brandenburg University of Technology
Cottbus

International Office, Nina Wolfeil

OUTLINE

1. **BTU and Internationalisation at a Glance**
2. **Study Abroad and Recognition**
3. **Management of Bilateral Agreements and MoUs**
4. **Best Practice Example: EUROFOS Postgraduate Master Forensic Sciences**
5. **Pros & Cons Formalised Agreements**
6. **Points of Discussion**

01. BTU and Internationalisation at a Glance



Brandenburgische
Technische Universität
Cottbus

BTU - Facts and Figures

Founded: **15th of July 1991** · **6,722** students · **119** professors · **571** research officers · **577** non-academic staff

Funding 2010 **52.9 Mio. €** ·

Third-party funding 2010: **20 Mio. €**

Faculties

- Faculty 1 – Natural Sciences, Mathematics, and Information Technology
- Faculty 2 – Architecture, Civil Engineering, and Urban Planning
- Faculty 3 – Mechanical Engineering, Electrical Engineering and Industrial Engineering
- Faculty 4 – Environmental Sciences and Process Engineering



01. BTU and Internationalisation at a Glance



Brandenburgische
Technische Universität
Cottbus

High share of International Students

- 17% of our student population come from abroad
- Main countries of origin: China, Poland, Cameroon

8 International Study Programmes

- First BSc in Environmental and Resource Management 1998
- Innovative Programmes: Environmental and Resource Management, World Heritage Studies, Forensic Sciences and Engineering
- 33% of international students

Internationalisation of Teaching

- 2008 internationalisation strategy
- 2010 participation in the HRK-internationalisation audit
- 2011 catalogue of measures/ ERASMUS monitoring



02. Study Abroad and Recognition



Brandenburgische
Technische Universität
Cottbus

Which possibilities exist for BTU students to go abroad?

1. ERASMUS

- Study placements at European partner universities
- 100 partner universities (to be reduced!)
- 123 agreements
- **Low outgoing mobility** (41% utilisation ratio)

2. STUDEXA (STUDent EXchange Abroad)

- Study placements at overseas partner universities
- 61 places in USA, Australia, Asia
- Participation in the GE4 network
- **High outgoing mobility** (97% utilisation ratio)

3. DUAL DEGREES

- BSc Physics, BSc/MSc Architecture, MSc Power Engineering, MSc Forensic Sciences and Engineering
- Italy, Hungary, Poland, Taiwan, China
- **Low outgoing mobility**

02. Study Abroad and Recognition



Brandenburgische
Technische Universität
Cottbus

The Recognition Cycle Studies Abroad

Step 6: Decentralised Recognition (upon return)

Advice on recognition procedure
Recognition decision by the examination board of the study programme

Step 5: Monitoring (during studies abroad, Sept./Oct.)

Changes of the learning agreement

Step 4: Preparation (until June/July)

Information sessions, intercultural workshops

Step 1: Promotion of Places (Oct./Nov.)

Information sessions, advice
ERASMUS departmental coordinator + International Office

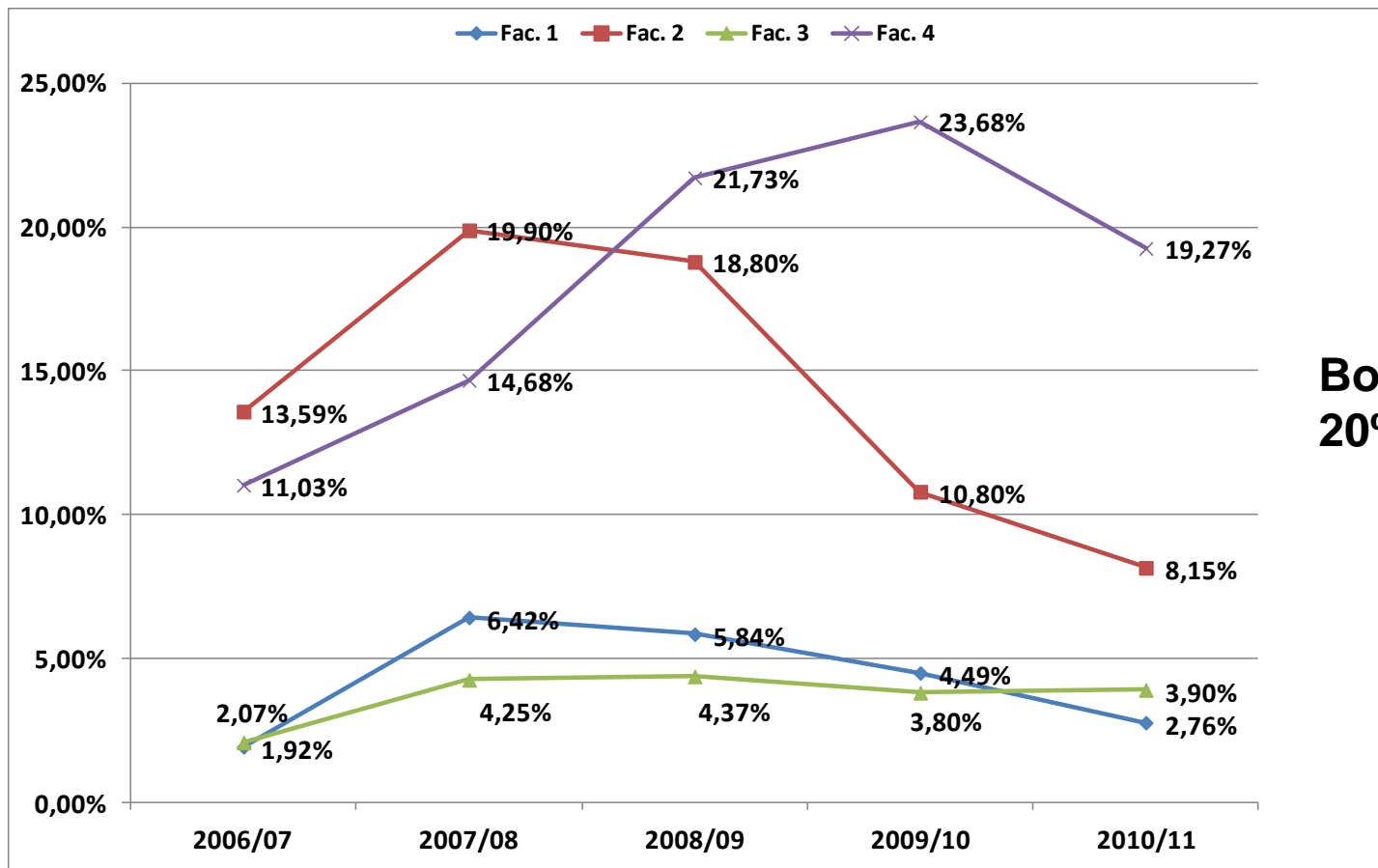
Step 2: Application and Learning Agreement (Jan.)

Online-Application Move On including **learning agreement**

Step 3: Selection Procedure and Nomination (March)

02. Study Abroad and Recognition

Development of Outgoing Mobility – Relative Share According to Faculties



**Bologna goals:
20%!**

02. Study Abroad and Recognition

Obligatory Semester Abroad

- Environmental and Resource Management (2010 DAAD Best Recognition Award)
- MSc Structural Engineering, MSc Civil Engineering



Catalogue of measures: more „windows of mobility“ + additional dual degrees
EU

2010: Survey among 1st and 2nd year students at Faculty 2

- 58.9% fear that modules earned abroad will not be recognised



More transparency needed



02. Study Abroad and Recognition

Recognition in Environmental and Resource Management

Study Regulations

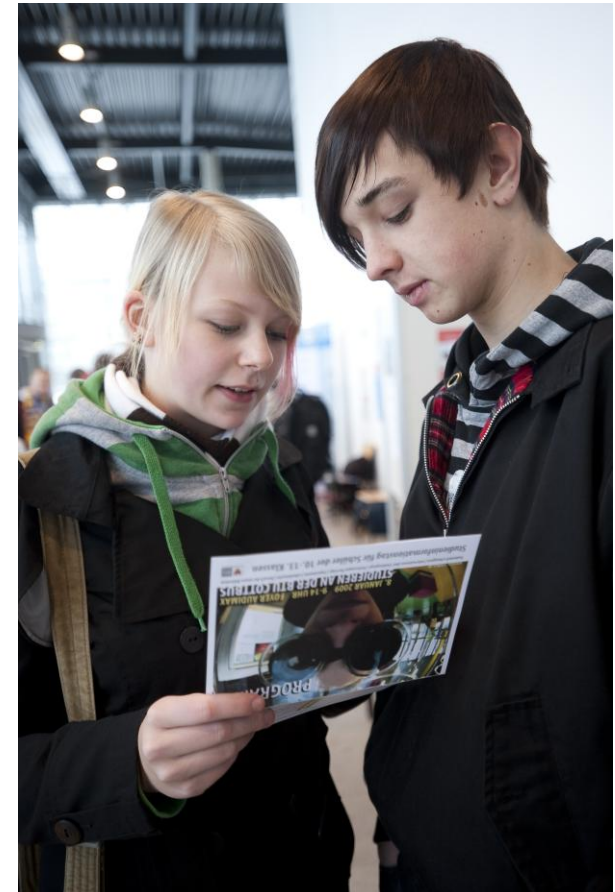
- All compulsory modules finished by semester four, 5th semester abroad
- 30 ECTS credits to be earned (margin 18-36 accepted)
- Learning agreement signed by the head of the examination board
- After return: comparison transcript + LA

Regulations in agreements with partner universities

- No specific regulations, basic bilateral agreements, STUDEXA agreements



Flexible study regulations more important than specific terms in agreements



03. Management of Bilateral Agreements and MoUs

(1) ERASMUS Bilateral Agreements

- Responsibility: Institutional Coordinator
- Suggestion by departmental coordinator
- Annual evaluation session

(2) General MoUs/ STUDEXA

- Contract management: International Office
- Signature: President, co-signatures: Chancellor, in-house legal adviser

(3) Cooperation Agreements in Joint Programmes with International Partners

- Contract Management: International Office
- Decision by the Commission of Teaching, Further Education, and Personnel Development
- Signature: President, co-signature: legal adviser, Registrar's Office, Department for Teaching, Bureau for International Studies, Chancellor



03. Management of Bilateral Agreements and MoUs

Essential Parts of MoUs regarding student exchange (STUDEXA)

- ✓ Selection/nomination procedure
- ✓ Language skills incoming/outgoing students
- ✓ Annual quota
- ✓ Tuition fee waiver
- ✓ Terms on recognition/ usage of learning agreements (workload, recognition)
- ✓ Services provided to international students
- ✓ Validity/ financial matters



03. Management of Bilateral Agreements and MoUs

Essential Parts of Cooperation Agreements for Joint Programmes/Dual Degrees

- ✓ Selection procedure + criteria (subject, language competency)
- ✓ Managing committee
- ✓ Organisation of Studies/Schedule (which modules need to be passed where)
- ✓ Services provided to international participants
- ✓ Tuition fee waiver
- ✓ Terms on achievements at each university
- ✓ (Grade conversion sheet)?
- ✓ Degree(s) awarded upon completion of the programme



04. Best Practice Example: EUROFOS Postgraduate Master in Forensic Sciences



Brandenburgische
Technische Universität
Cottbus

- Dual Degree with four partners: start 2011/2012

**University of Parma
(consortium leader)**
Italy

University of Messina
Italy

BTU Cottbus
Germany

**EÖTVÖS
Lorand University**
Budapest, Hungary

1st semester home university, 2nd at a partner institution

04. Best Practice Example: EUROFOS Postgraduate Master in Forensic Sciences

Articles

- Scope of Agreement
- Selection Criteria and Procedures
- Organisation of Studies
- Acknowledgement of student achievements
- Assistance at host institution
- Examination and study regulations
- Degree
- Financial and other arrangements
- Monitoring of the Programme
- Scholarly Exchange
- Publicity and promotional material
- Efficacy and Interim Regulations
- Disclaimer/Miscellaneous

Annex

- 1: Eurofos Admission Criteria
- 2: Master's Calendar
- 3: Double Degree Scheme
- 4: Joint Committee
Representatives
- 5a: List of Modules (BTU)
- 5b: List of Modules (UNIPR)
- 5c: List of Modules (UNIME)
- 5d: List of Modules (ELTE)
- 6: Conversion of Examination
Results
- 7: Tuition and Extra Fees

05. Pros & Cons formalised agreements



Brandenburgische
Technische Universität
Cottbus

Pros

- Give students certainty
- Help us to think of problems before they appear
- „Translate“ national system and rules
- Create common standards + facilitate the EHEA

Cons/ Challenges

- See above: study regulations more important
- Impossibility to clarify everything in advance
- Administrative burden
- Inflexibility
- Incapability of other units than International Office to provide services in English
- Move to „translate“ European instruments (ECTS User's Guide, Lisbon Recognition)

06. Points of Discussion

- Challenge to integrate **European instruments** (grade transfer) into cooperation agreements?
- Choice of partner and **check of curriculum** more important than contract management?
- Exchange of **European best practices** with regard to recognition needed?
- Surveys among participating students as a **monitoring instrument**?

Thank you very much for your attention!

Questions?

nina.wolfeil@tu-cottbus.de