



AARHUS
UNIVERSITY
SCHOOL OF ENGINEERING

29TH OCTOBER 2012

DROP-OUT

JENS BENNEDSEN
PROFESSOR, HEAD OF CDIO DEVELOPMENT LAB



ME

- > Not an engineer
- > Teaching != learning
- > You learn something iff
 1. You work
 2. On the edge of your competences
 3. With something that you are motivated by

The ultima formula, Steen Larsen



WHAT IS A HIGH DROP-OUT RATE?

1. 0 %
2. 1-5%
3. 6-10%
4. 11-15%
5. 16-20%
6. 21-25%
7. 26-30%
8. 31-40%
9. 41-50%
10. Above 50%

WHO HAS THE **MAIN** RESPONSIBILITY FOR **PREVENTING** DROP-OUT?

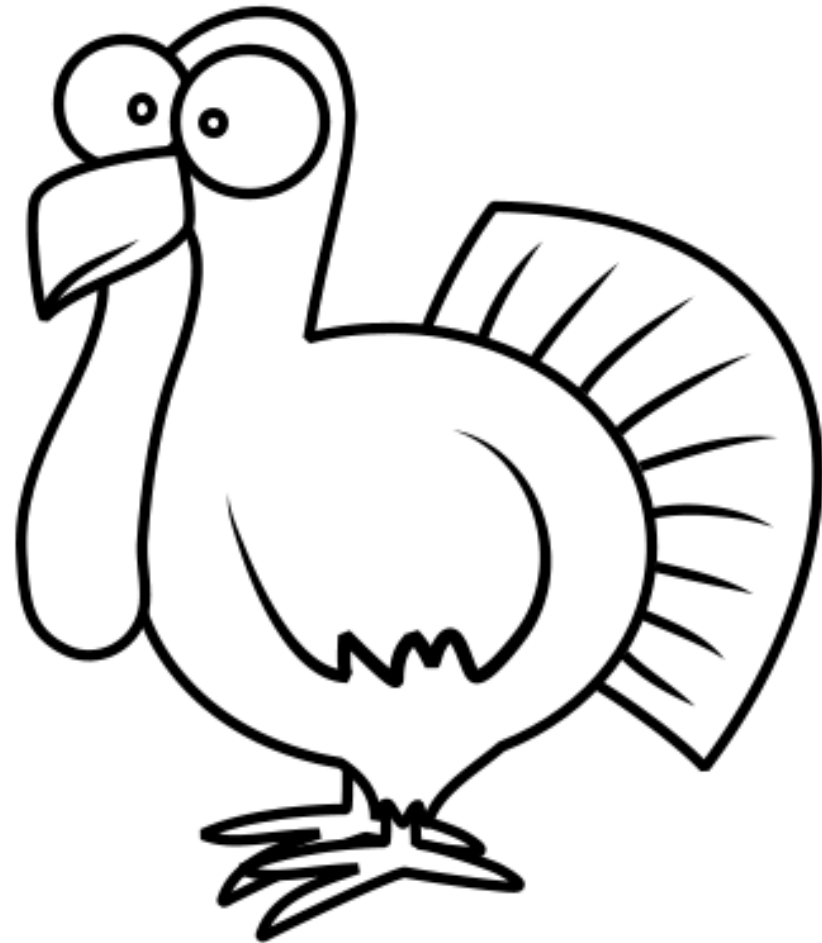
1. The student
2. The teacher(s)
3. The institution
4. The students family
5. The government

WHAT IS MEANT BY "DROP-OUT"?

- > A student who
 1. Never shows up
 2. Shows up in the first weeks and leaves the institution
 3. A students who is at the institution after a month but leaves without a degree
 4. A student who studies in one year, leaves the institution without a degree
 5. A student who leaves the institution but finishes with another degree
 6. Something else
- > Two types of drop-out
 - > Qualified drop-out (reelection of study programme)
 - > Leaving without a new educational goal

OUTLINE

- › Background
- › Initiatives

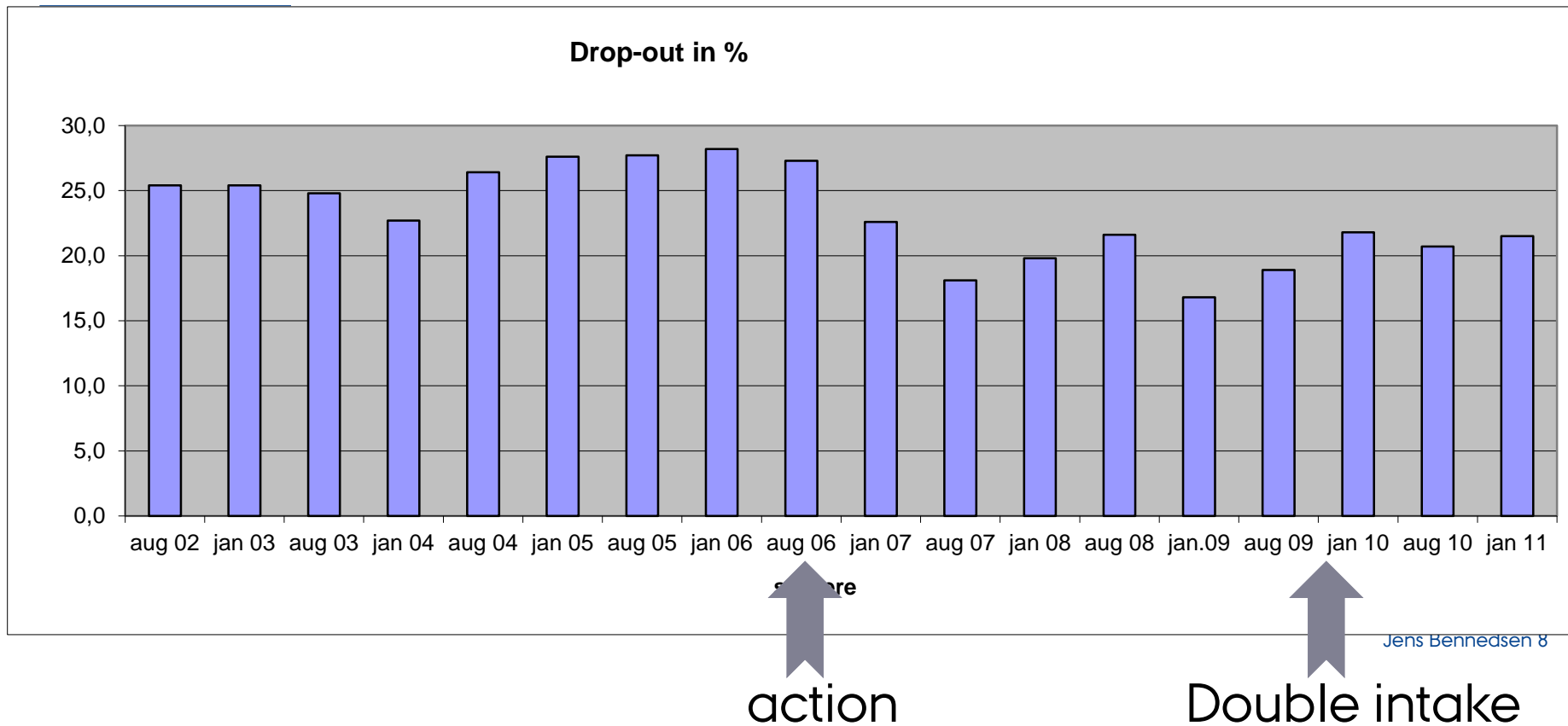


BACKGROUND

- › Professional bachelor
- › Danish system



OUR DROP-OUT RATE



THE DANISH GOVERNMENT'S PLATFORM: THE 2020 PLAN

> Education

- > 95 per cent to complete an upper-secondary education
 - > 60 per cent to complete a post-secondary bachelors degree
 - > 25 per cent to complete a post-secondary masters degree
 - > 2.5 per cent to complete a doctoral degree
-
- > Better post-secondary degree programmes
 - > Decreased time-to-degree
 - > Coherent structure and smoother transitions between levels in the educational system

POLITICAL INCENTIVES

- › Money after the amount of passed ECTS
- › Extra money when finishing
- › Extra points for students who start shortly after their high school exam
- › Extended focus on research ☹️



QUESTION - TPS

- › Use 30 sec and answer within your self: "What initiatives have my INSTITUTION done to lower the drop-out rate?"
- › Share your answer with your neighbor



INSTITUTION INITIATIVES

- › Improve the fac/stud ratio
- › Mentoring system
- › Student coordinator
- › QA
- › Project work for beginners
- › Counseling program
- › Pre study courses in math + additional courses in 1. year
- › Entry test

DATA

› Or background for my talk



FINDING 1- CARE

- › Teachers care about students
 - › *the most important action is that we view the students as persons – not student-numbers*
- › Management: motivate and support lecturers in developing their empathy for students



ASE INITIATIVES – BEFORE STARTING

- › High school students visit
- › Math brush-up



ASE INITIATIVES – WHEN STUDYING

- › Formal conversations between the student and a student counselor
- › Close interaction with students who have a high risk of drop-out
- › Study technique course
- › Exam training
- › Student mentoring scheme
- › Networks of "minority students"



CONSIDERED INITIATIVES

- › Prediction of success
- › Extra semester in the summer



DOES DROP-OUT IN THE ENGINEERING SCIENCES CONTRIBUTE TO MAINTAINING THE HIGH QUALITY OF AN ENGINEERING EDUCATION?

1. No
2. A little
3. Some
4. A lot
5. The most important factor
6. Do not know

WHAT IS AN ACCEPTABLE DROP-OUT RATE?

1. 0 %
2. 1-5%
3. 6-10%
4. 11-15%
5. 16-20%
6. 21-25%
7. 26-30%
8. 31-40%
9. 41-50%
10. Above 50%

감사합니다 Natick

1. Yes

Danke Ευχαριστίες Dalu
Thank You Köszönöm
Tack
Спасибо Dank Gracias
谢谢 Merci Seé
ありがとう

Obriigado

WHAT IS A HIGH DROP-OUT RATE (2)?

1. 0 %
2. 1-5%
3. 6-10%
4. 11-15%
5. 16-20%
6. 21-25%
7. 26-30%
8. 31-40%
9. 41-50%
10. Above 50%

WHO HAS THE MAIN RESPONSIBILITY FOR PREVENTING DROP-OUT (2)?

1. The student
2. The teacher(s)
3. The institution
4. The students family
5. The government

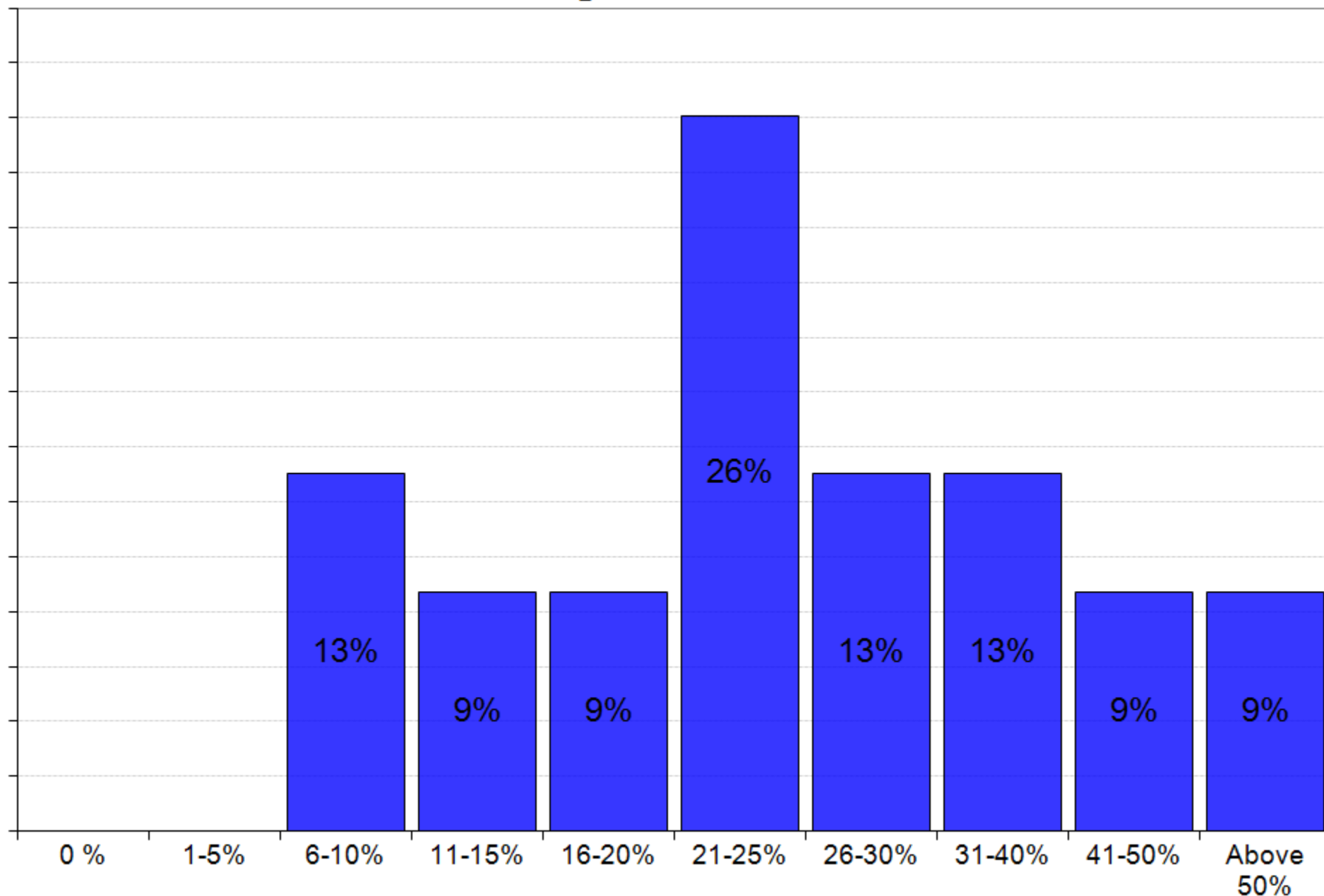
DOES DROP-OUT IN THE ENGINEERING SCIENCES CONTRIBUTE TO MAINTAINING THE HIGH QUALITY OF AN ENGINEERING EDUCATION (2)?

1. No
2. A little
3. Some
4. A lot
5. The most important factor
6. Do not know

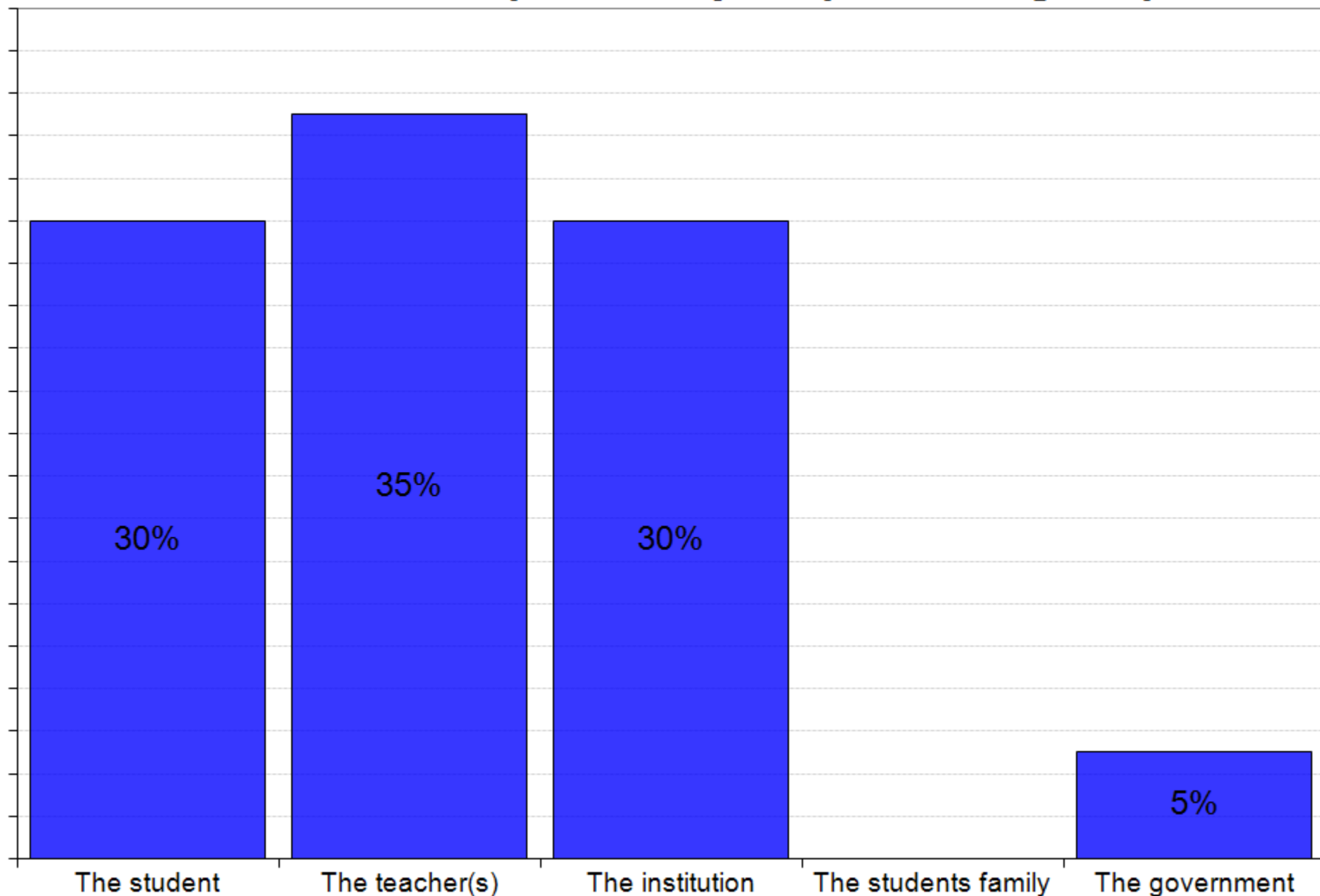
WHAT IS AN ACCEPTABLE DROP-OUT RATE (2)?

1. 0 %
2. 1-5%
3. 6-10%
4. 11-15%
5. 16-20%
6. 21-25%
7. 26-30%
8. 31-40%
9. 41-50%
10. Above 50%

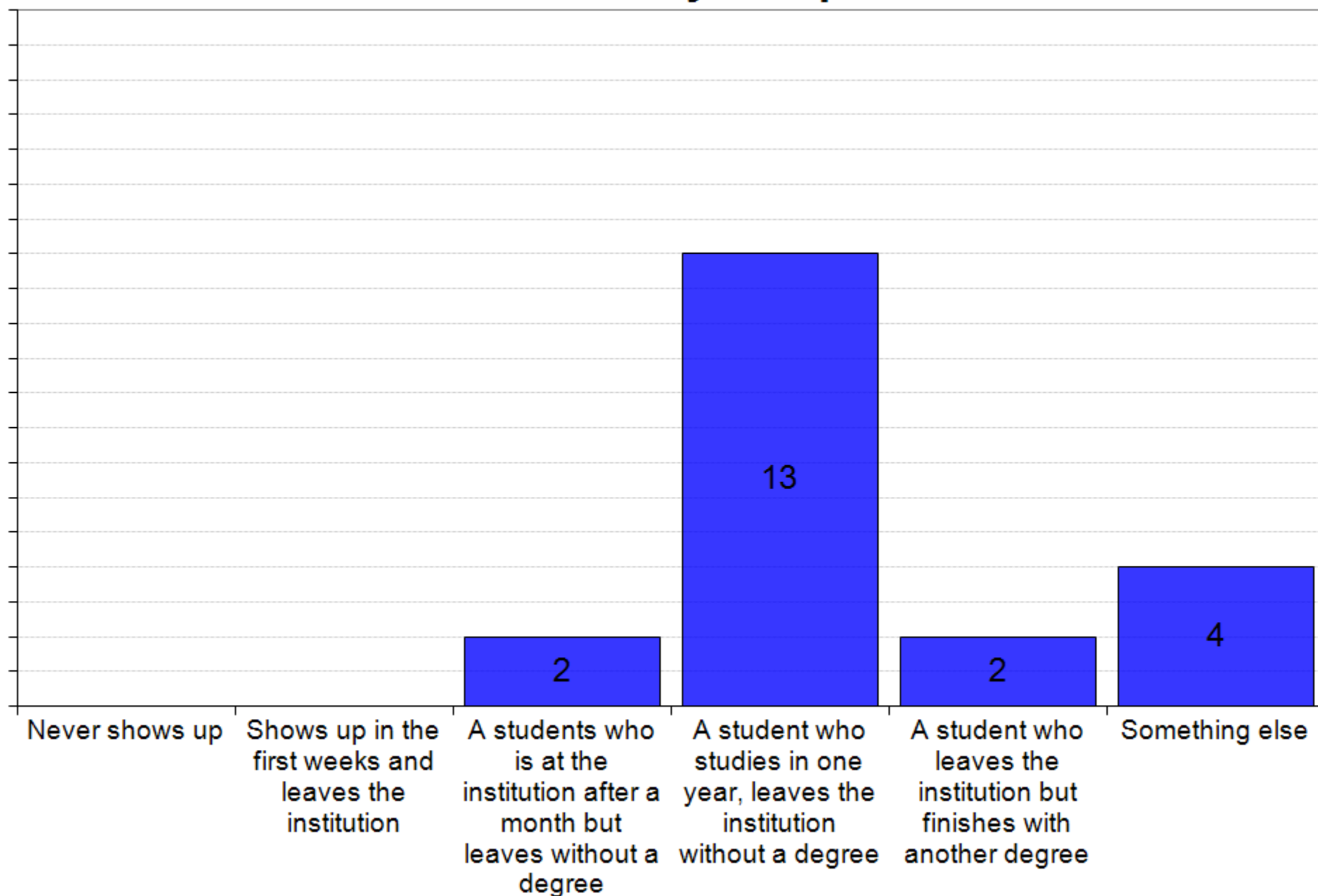
What is a high DROP-OUT rate?



Who has the main responsibility for preventing drop-out?



What is meant by "drop-out"?



Does drop-out in the engineering sciences contribute to maintaining the high quality of an engineering education?

